

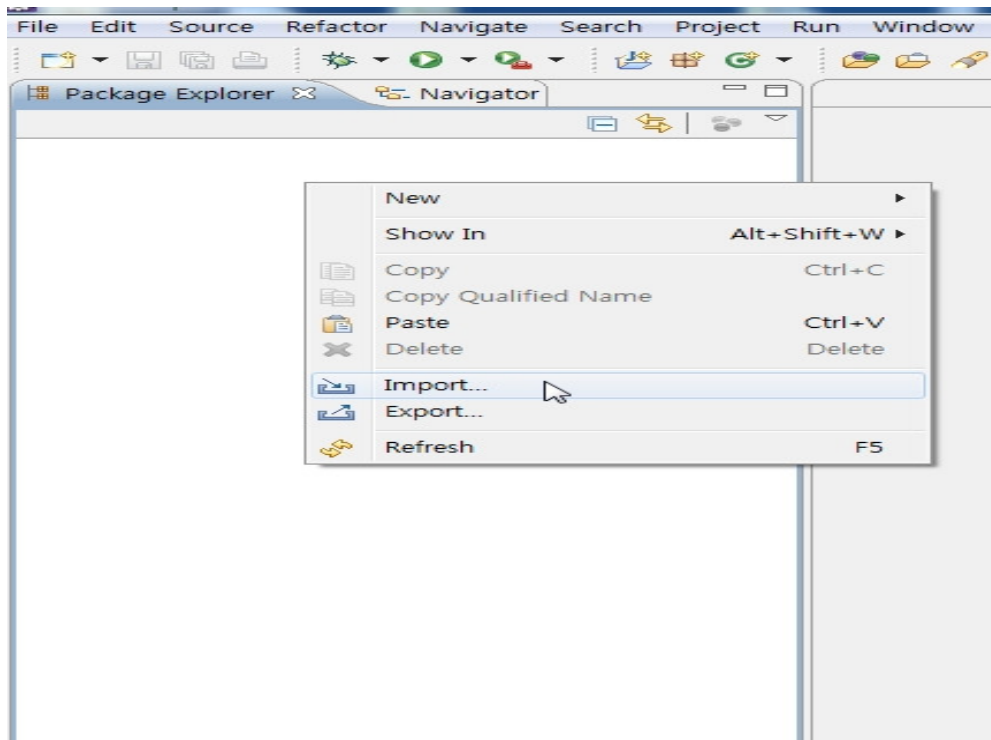
Installation method of individual example

Installation sequence

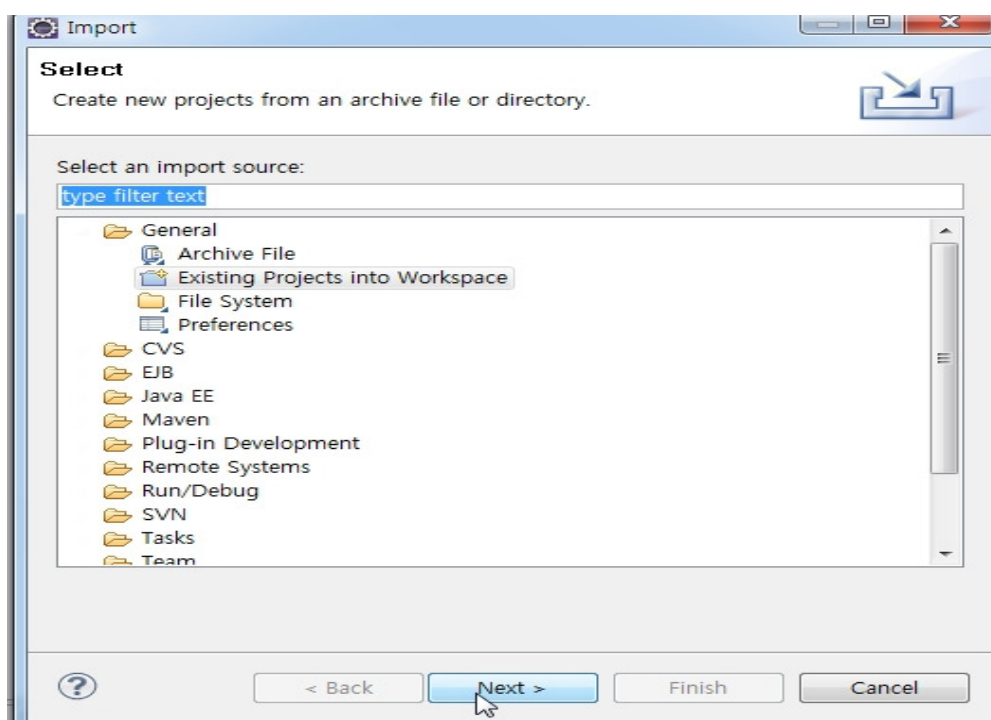
Basic sequence

This is installed with individual example source file (zip file) and development environment 2.0 which are downloaded from the home page of eGovFrame. In the case of using general eclipse, description is proceeded under the assumption that m2eclipse has been installed.

1. Import the source by clicking the right side mouse at Package Explorer.

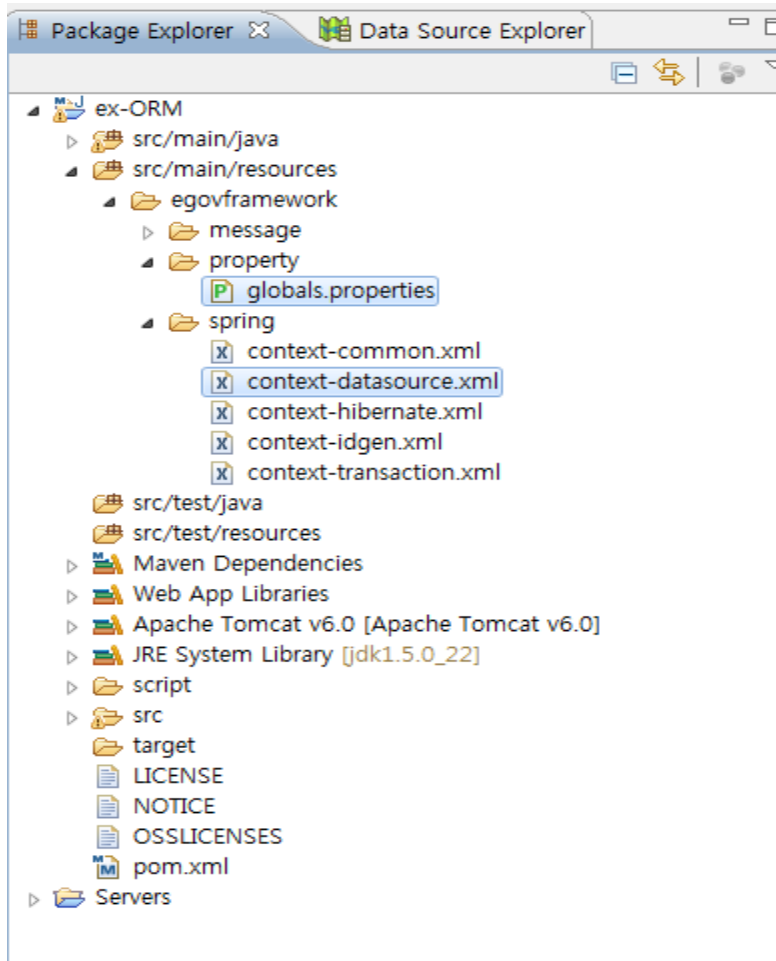


2. Choose the Select archive file by selecting General > Existing Project into Workspace, and select the downloaded zip file.

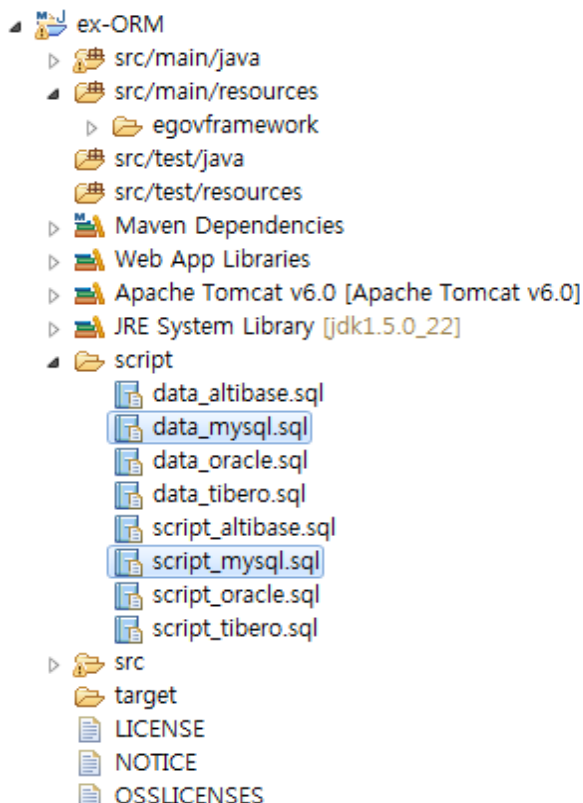


3. In the case of the example which uses DB, adequately change DB information by editing globals.properties and datasource.

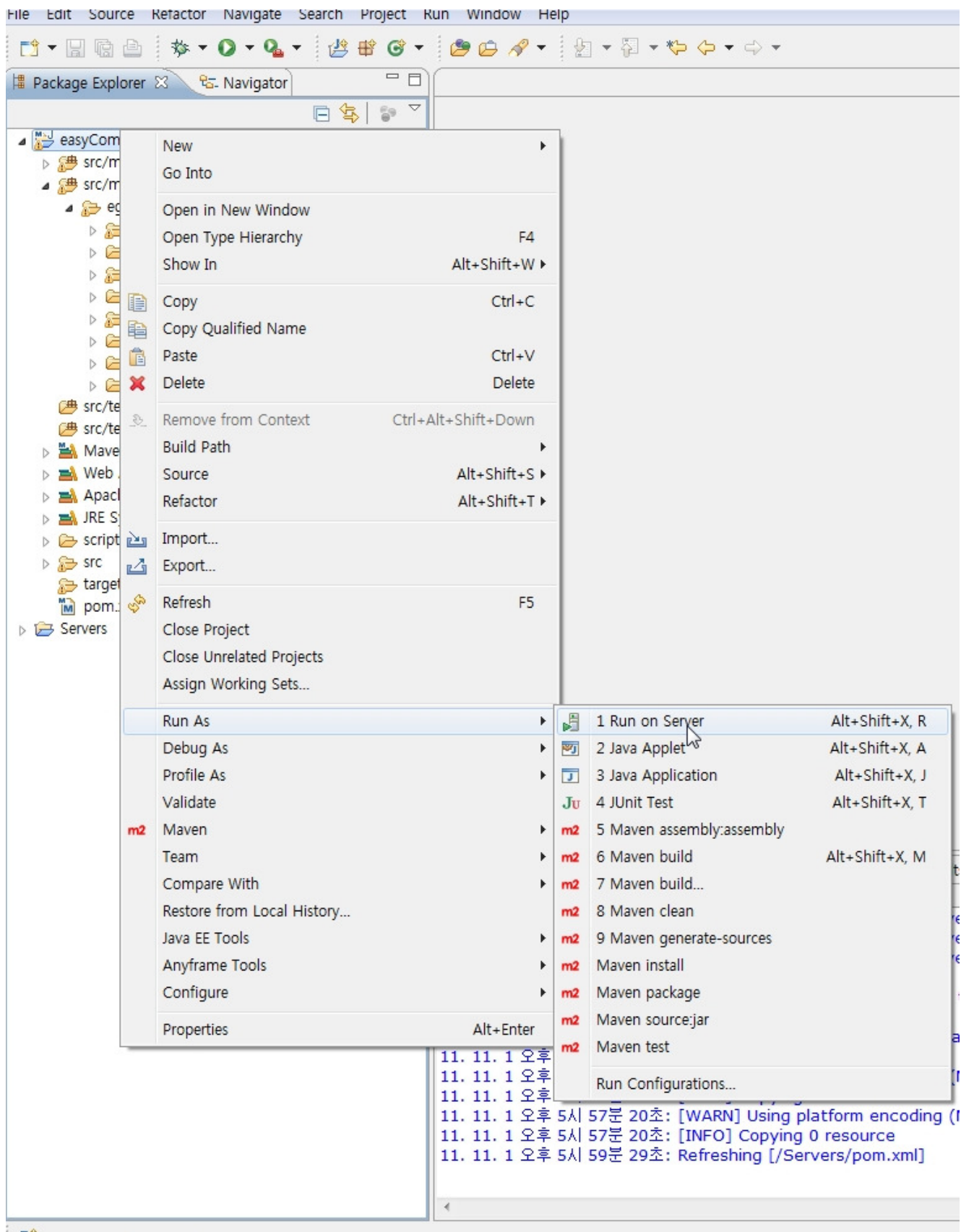
Location:src/main/resources/egovframework/property/globals.properties
src/main/resources/egovframework/spring/context-datasource.xml



4. Generate table by referring to script, data files of script folder.



5. Execute the project. (Right-clicking > Run As > Run On Server)



6. Select the installed Tomcat version, and execute the project by clicking Next or Finish.

Run On Server

Select which server to use

How do you want to select the server?

☐ Choose an existing server

☒ Manually define a new server

[Download additional server adapters](#)

Select the server type:

type filter text

- Tomcat v4.0 Server
- Tomcat v4.1 Server
- Tomcat v5.0 Server
- Tomcat v5.5 Server
- Tomcat v6.0 Server
- Tomcat v7.0 Server

Publishes and runs J2EE and Java EE Web projects and server configurations to a local Tomcat server.

Server's host name: localhost

Server name: Tomcat v6.0 Server at localhost

Server runtime environment: Apache Tomcat v6.0 [Add...](#)

[Configure runtime environments...](#)

☐ Always use this server when running this project

[?](#) < Back Next > Finish Cancel

Responding sequence for occurrence of error

[Responding sequence for occurrence of error](#)